

CART CHAMBERS

"K1" UV-C Chamber Superior Cart Disinfection

Overview:

- Fastest treatment cycle w/ no dwell required
- Heavy gauge aluminum build w/ durable powder-coat finish
- Structural base with leveling feet ensures stability
- HMI touchscreen control and diagnostics for user-friendly operation
- PLC based controls for efficient performance
- UL/CSA rated controls and components

Disinfection System:

- 12,000 run-hour germicidal lamps for prolonged use
- Shatterproof, non-ozone lamps for safety
- PIR heat/motion detection safety sensor for added protection
- Control panels mounted on the roof to optimize space utilization
- Extra-wide doors for maximum cart accommodation
- Fully contained disinfection system with no water or chemicals required
- Reduces wet mess after the treatment cycle
- Supports industry healthcare accreditations

Efficiency and Productivity:

- Most efficient cart disinfection with the best single-cart productivity rate
- Appropriate for all cart types
- Requires no daily adjustments, minimizing operating costs
- Over a century of scientifically established efficacy

DISINFECTIO
CHAMBERS



"K1" Single Cart UV-C Chamber

Performance:

- Inactivates bacteria and viruses in seconds
- Consistent, repeatable, high-level disinfection
- Over a century of scientifically established efficacy

Technical Specifications:

- Electrical
 - 120/60/1 20 FLA
- Compressed Air
 - 1/2" NPT, 1 CFM @ 80 PSI
 - Filtered and Dried for optimal performance
 - Doors: 40 psi; Cart ejection: 80 psi

Added Options:

- Automated end-of-cycle cart ejection



Ask about our multi-cart chamber options or our retrofit systems for existing chambers!

www.energenics.com

CART CHAMBERS

"K1" Ultraviolet-C (UVC) Cart Disinfection Chamber

Dimensions:

ROOF MOUNTED
CONTROL PANELS

MAIN PANEL

(42"H X 36"W X 10"D)

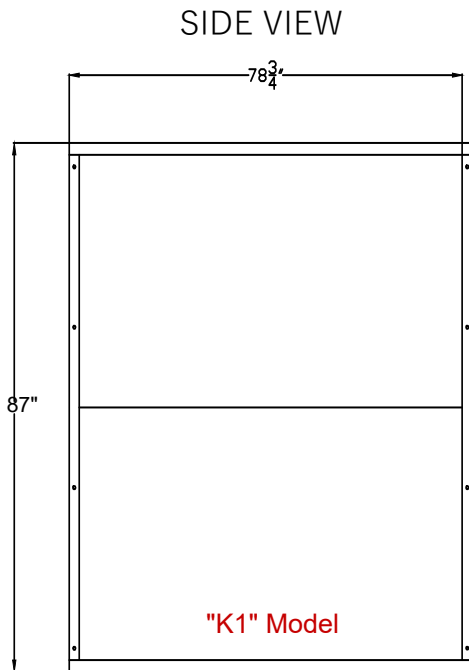
(Both Panels Roof Mounted)

SATELLITE PANEL

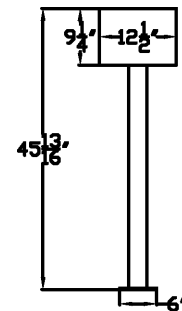
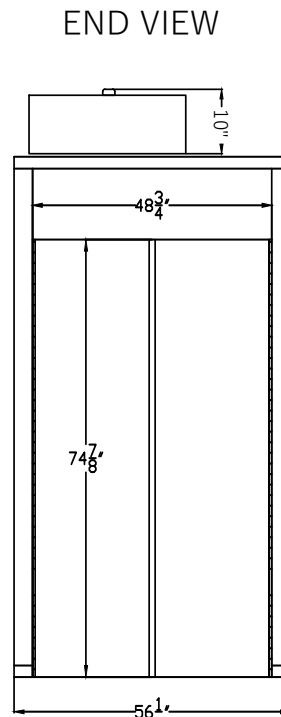
(36"H X 30"W X 8"D)

(Both Panels Roof Mounted)

PEDESTAL HMI



24" Ramp per Entry/Exit



Effective, Efficient, Sustainable



Fully Assembled & Factory Tested

www.energenics.com