

## In-line Space Saver Lint Collector

### Standard Features:

- 8,000 CFM capacity
- UL Class 2 fire retardant fiberglass
- UL508a PLC control
- Air solenoid valve for blow-down
- (3) Built-in logic methods for blow-downs
- Lint screen
- Lint collection bag
- Support legs
- Left hand inlet (shown); right available

### Optional Features:

- Side discharge (rotates 360°)
- Fire suppression system (FSS)
- Excess pressure alarm
- Inlet collars
- Compressed air storage tank
- Pre-plumbing & pre-wiring
- Magnahelic pressure gauge
- Additional radius inspection door:  
contact for available locations & as-built  
drawings
- Variable speed air flow optimizer (for  
long or undersized duct runs)
- Lint drum w/ flexible connector

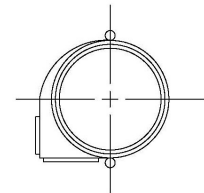
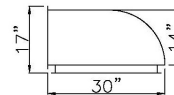
### Utility Requirements:

- 120/240v Single phase; 1.3/.65FLA
- 30ft<sup>3</sup> Compressed air per blow-down  
(2.5 SCFM compressor load)
- 1" Compressed air connection
- 3/4" Cold water connection for FSS  
(8 gpm when activated)

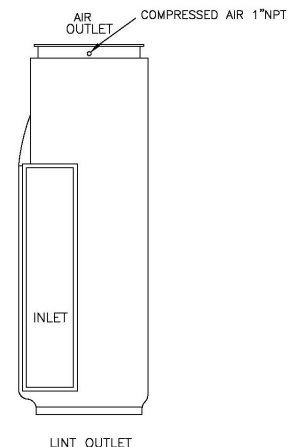
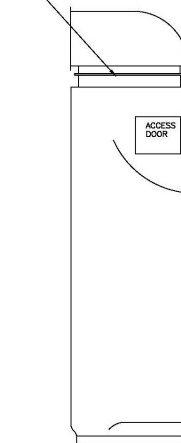
# FRP SERIES



FRP filter designed for special applications  
\*Call for standardized alternatives



MOUNTED WITH BAND  
SO OUTLET CAN ROTATE



FRP-8

