

KART CHAMBERS

Hypochlorous Acid Cart Disinfection

Features:

- Industry established cart disinfection system
- On-site, on-demand chemical production within the unit
- All-natural, superior chemical disinfectant
- Stainless steel /insulated dual wall construction
- Built-in mechanical chamber
- HMI touchscreen control and diagnostics
- Fully adjustable cycle times
- Pass-through entry/exit doors
- PLC based, UL listed controls and components
- Over-pit drain configuration (standard)
- Easily accessible service components
- Less than 1 gallon water per cart (standard)

Benefits:

- Effective against the toughest bacteria and viruses
- 3-cents per gallon operating cost
- No outside purchased chemicals required
- Disinfectant can be used throughout plant
- Up to 30 carts per hour productivity rate
- Accommodates all cart types
- Leaves no residue
- Requires no daily adjustments
- Supports industry healthcare accreditations

Disinfection:

- Dwell = 30 second disinfection
- User adjustable pH for maximum control
- 80-100 times stronger than liquid bleach
- Requires food grade salt (99.9% pure) for chemical production



DISINFECTION CHAMBERS



Quaternary Chamber (w/ sump, ramp, and blower)

Utilities:

- Water
 - 1/2" NPT, 10 GPM @ 35 PSI
 - Required: cold* and softened (*below 85° F mandatory)
- Compressed Air
 - 1/2" NPT, 1 CFM @ 80 PSI
 - Filtered and Dried
 - Doors: 40 psi; Cart ejection: 80 psi
- Electrical
 - 120/60/1 20 FLA (dedicated for chemical generator)
 - 240/60/3 20 FLA, or
 - 480/60/3 40 FLA

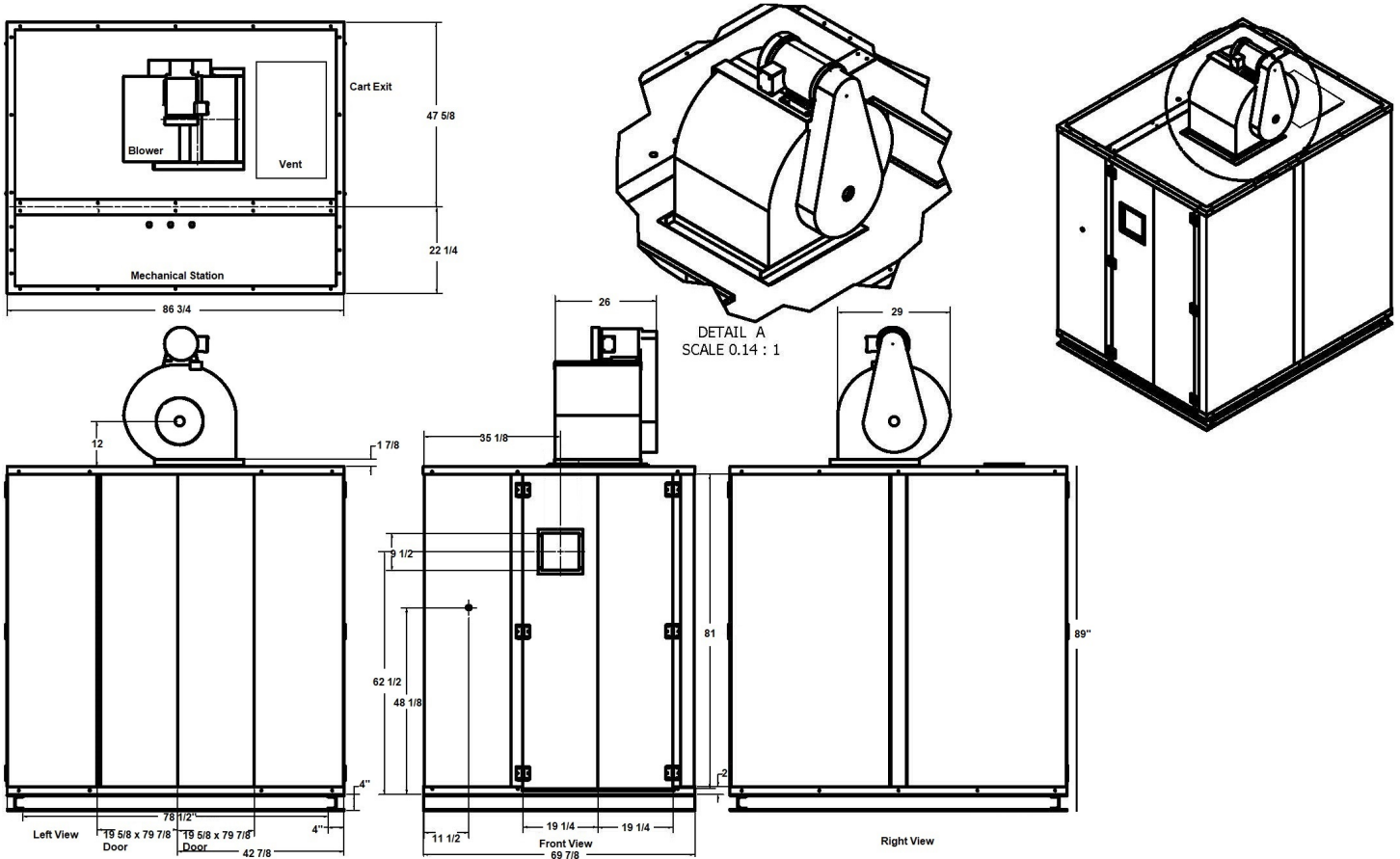
Added Options:

- Pre-wash cycle with additional pump and spray assembly
- Automated entry/exit doors
- Automated end-of-cycle cart ejection
- Built-in sump with ramps (for level floor installations)
- Forced air drying assist

KART CHAMBERS

Quaternary Chemical Cart Disinfection Chamber

Dimensions:



Energenics Corporation "Kartwasher" Disinfection Chamber is a cart disinfection system. A pre-wash cycle is available as an added option.



Fully Assembled & Factory Tested

www.energenics.com